

## HOW TO SET UP WORDS USING THE ATOMIC ALPHABET

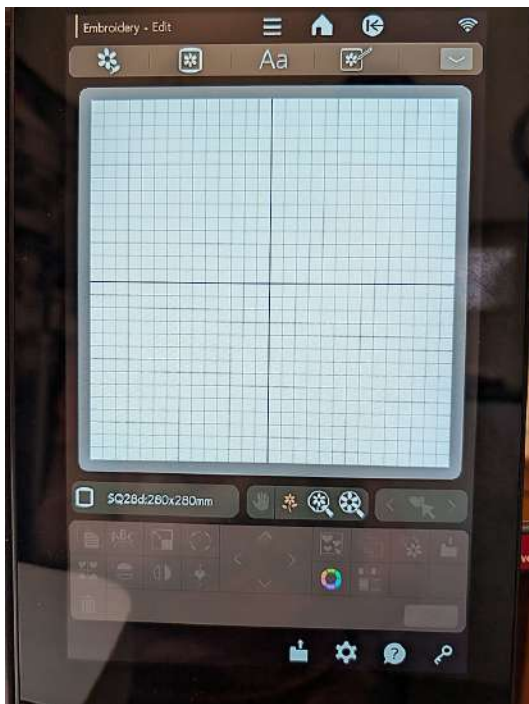
The font we chose to match our Atomic Embroidery Design Collection is based on a True Type Font called "Winter-is-Coming". The capital letters from this font have an uneven base line, so to make it easier to line up the letters, we have included a line of basting stitches to help with alignment.

As with all the embroidery components, the alphabet is offered in seven major machine embroidery formats: ART, EXP, JEF, JPX, PES, VIP and VP3.

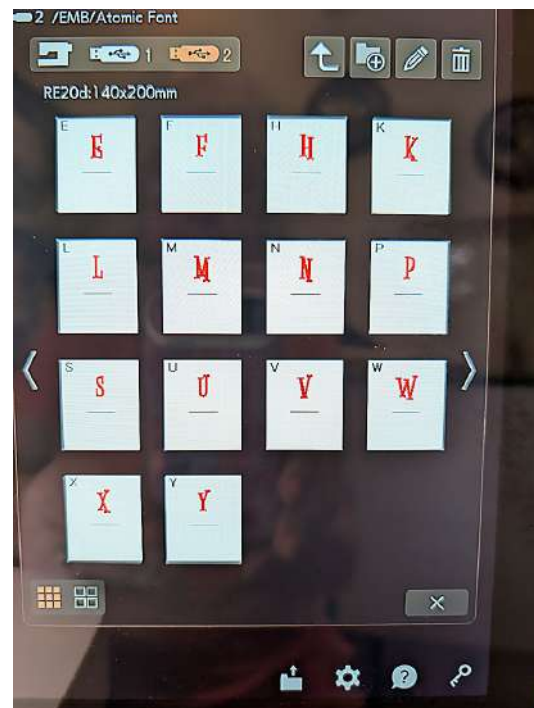
Each letter has a finished height of 1½" (27mm)

All our samples were stitched on the top-of-the-line Janome Continental M17 sewing and embroidery machine. *One note to keep in mind: we initially used the larger Janome SQ28d Hoop when building our custom lettering names/ words, which gave us more room to "play." Once the letters are grouped, they can be rotated 90° and changed to a smaller hoop (we used the RE20d Hoop that is 5½" x 8"). This switching of hoops is optional; you could certainly use a smaller hoop throughout the process. All that is necessary is to ensure the baste lines align.*

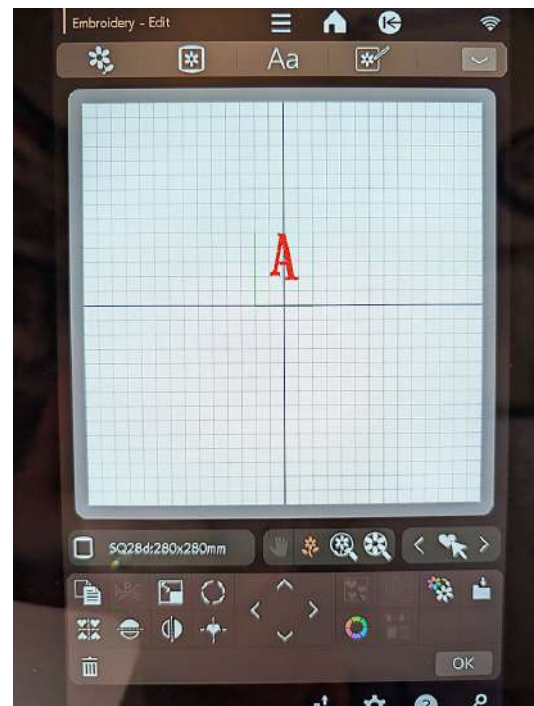
1. To create names or sayings, use the Edit Screen of your embroidery machine.



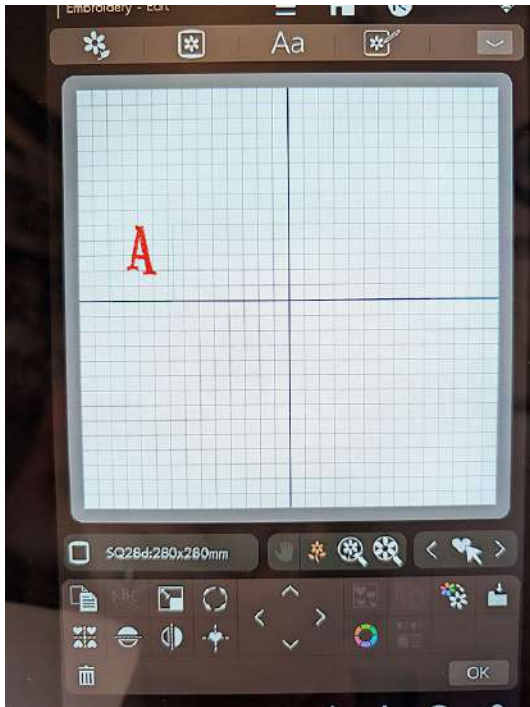
2. Open the folder into which you've brought the letters downloaded from the S4H project page (in your proper format). There are the standard 26 letters, so you will likely need to page through to see all the options.



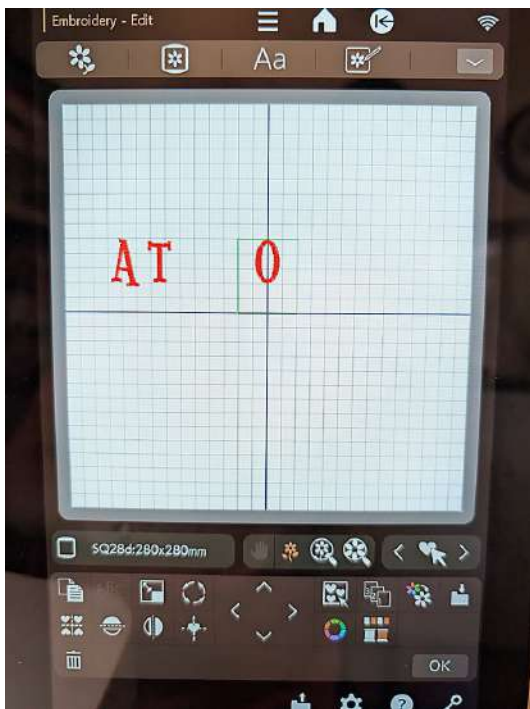
3. Open the individual letters one at a time and bring each onto the edit screen.



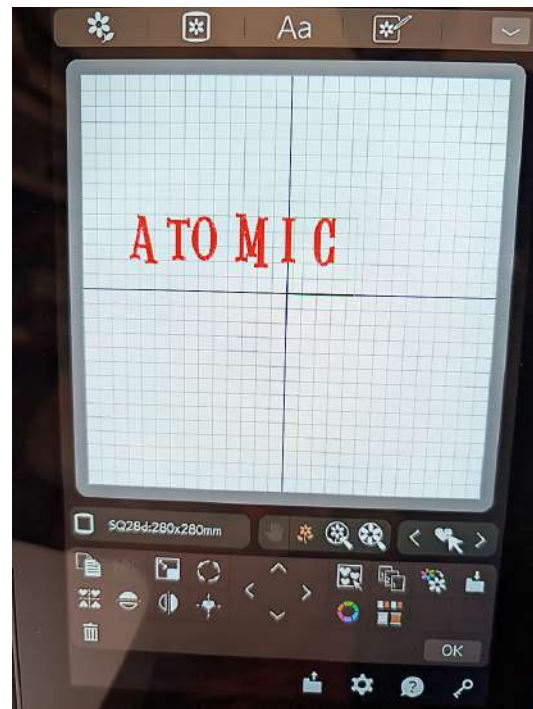
4. Move the letter left or right, into the desired order.



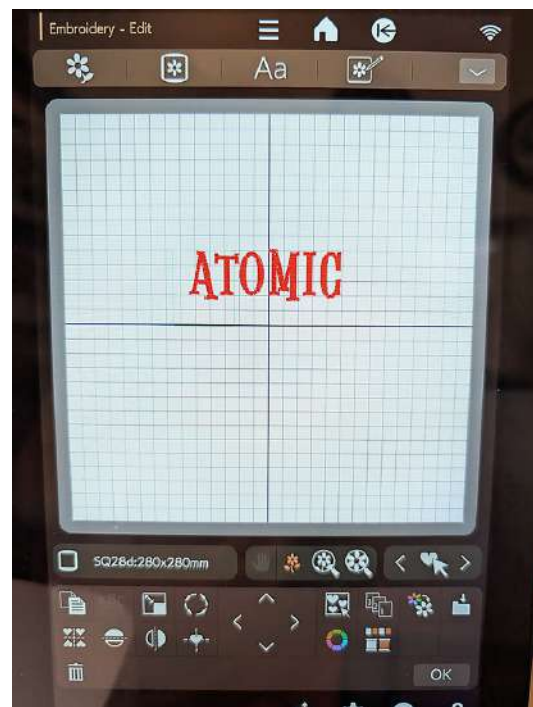
5. Continue bringing in and moving each letter...



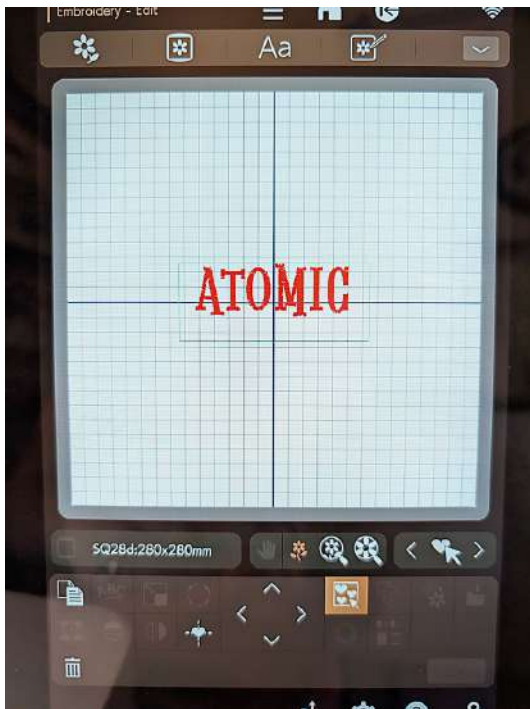
... until your word or name is complete.



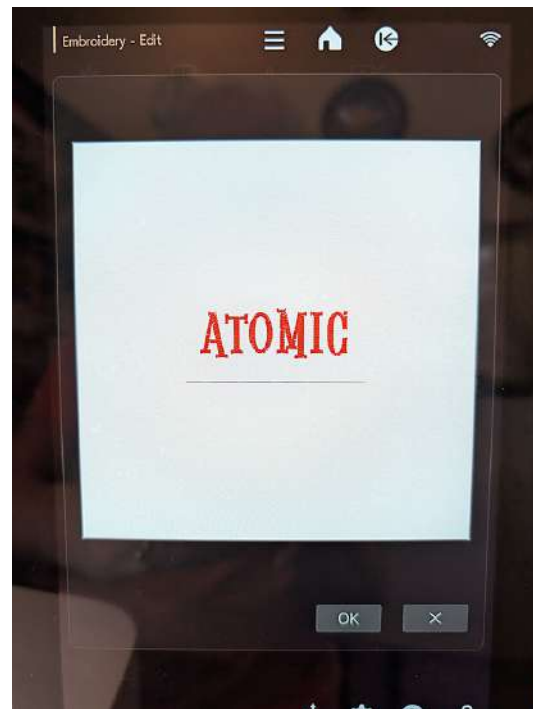
6. Adjust the spacing.  
NOTE: For machines that automatically center designs as they are opened, you may need to move the letters up and down until the line of basting stitches forms a straight line along the edit screen's axis.



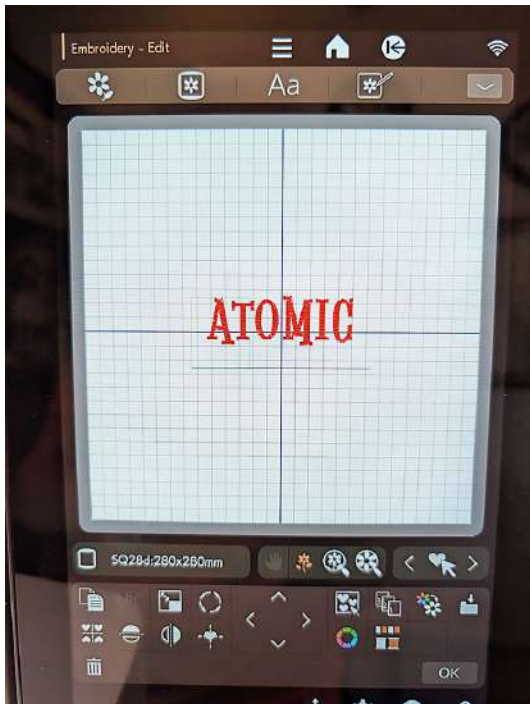
7. If your embroidery machine has the option, group the lettering and move it to the center.



8. If your embroidery machine has the option, color sort so the lines of basting are grouped and the lettering is grouped.



10. Advance through the design color by color to skip the line of basting, stitching only the letters. Repeat until the design is complete.



9. You are now ready to stitch.  
The main embroidery screen will show two colors:  
Black for the line of basting and a Color of Choice for each letter.



You might notice within our sample photos how we add individual Particle Starburst designs to either side of our ROSIE and ATOMIC towels. This is optional, but definitely a cute look and an easy addition using your machine's on-screen editing tools.

*The explanations and instructions in this PDF are published in good faith and have been reviewed for accuracy, however, no warranty, either expressed or implied, is made nor are successful results guaranteed. Since the nature and quality of the materials used and the workmanship of the individual creator are unknown, the finished products bear no warranty as to their safety or ability to perform any function adequately.*

*Sew4Home LLC shall not be liable for any special or consequential damages that result from the use of, or the inability to use, these instructions or the performance of the products recommended.*

*Should a typographical error be found, we will make every effort to resolve it. Once resolved, no restitution beyond replacement with a corrected version will be made.*

*All Sew4Home patterns and instructions are copyrighted and are for personal use only. All material (projects, artwork, text, patterns, photos, etc.) on Sew4Home is protected under the copyright laws. The instructions themselves and any associated patterns or pictures cannot be reproduced or reprinted in any way without the written permission of Sew4Home LLC. This also means our tutorials cannot be reprinted as a handout for use within a class without prior written permission. In addition, manufacturing of products made from our original designs for mass production or commercial use is strictly prohibited.*