

# KAFFE FASSETT RIBBON TOTE



## TUTORIAL

Designed by Elaine Schmidt  
for Renaissance Ribbons





## KAFFE FASSETT RIBBONS & FABRIC

It's so much fun to "play" with Kaffe Fassett's beautiful ribbons and combine them with his coordinating fabrics to create this easy-to-sew tote bag. Woven ribbons make wonderful bag handles, and the additional rows of ribbon sewn to the front and back of the bag add interest and texture. I used the *Palm Fan* and *Guinea Flower* ribbon patterns, but you can choose from any of Kaffe's ribbons to make this bag. Use just one or two patterns or go with several ribbons styles, as I have done, to create a colorful patchwork tote of ribbon and fabric.

## MATERIALS USED TO MAKE THE BAG

### Ribbon

- 3 yards 1½" Kaffe Fassett *Purple Palm Fan* ribbon
- 1½ yard 1½" Kaffe Fassett *Gold Palm Fan* ribbon
- 2 yards 7/8" Kaffe Fassett *Blue/White Guinea Flower* ribbon
- 2 yards 7/8" Kaffe Fassett *Blue/Pink Guinea Flower* ribbon

### Fabric

- ONE fat quarter Kaffe Fassett *Woven Shot Cotton Persimmon* for center of bag
- 3/8 yard Kaffe Fassett *Woven Shot Cotton Magenta* for sides of bag
- 1 yard Kaffe Fassett *Guinea Flower Pink* for lining
- 3/8 yard Kaffe Fassett *Palm Flower Ochre* for bottom of bag and inside pocket

### Additional Supplies

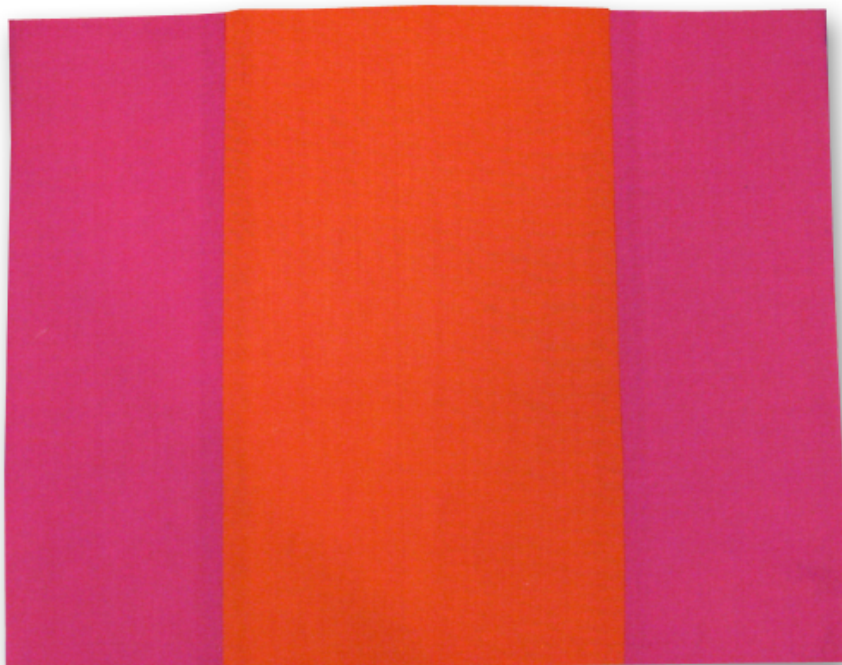
- ½ yard fusible fleece
- 20" x 36" rectangle of heavy weight fusible interfacing
- 3" x 13" rectangle of heavy cardboard or plastic canvas for bottom of bag
- Fabric glue
- Coordinating thread
- Sewing machine and usual sewing supplies



## INSTRUCTIONS

*Note: seam allowances are 1/2"*

- Cut TWO 9" x 13 1/2" rectangles of *Persimmon* fabric and FOUR 5" x 13 1/2" rectangles of *Magenta* fabric.
  - To make the back and front of the bag, stitch one *Magenta* rectangle to each side of the *Persimmon* rectangles.
  - Press seams toward the *Magenta* sides.
  - Cut TWO 13 1/2" x 17" rectangles of fusible fleece and iron fleece to back of both front and back panels.
- 
- Cut FOUR 17" lengths from both colors of 7/8" *Guinea Flower* ribbon.
  - Cut TWO 17" lengths from 1 1/2" *Purple Palm Fan* ribbon.
  - Position the ribbons horizontally onto the front and back of the bag panels and stitch close to the edges of the ribbon.
  - Add rows of quilting stitches 1/4" from each side of the ribbons.





- Cut FOUR 13½" lengths of *Gold Palm Ribbon*.
- Center a ribbon onto each seam and stitch close to the edges of the ribbon.
- Add rows of quilting stitches on each side of the ribbons.



- For bottom of bag, cut a 10" x 17" rectangle of *Ochre Palm Fan* fabric and fusible fleece.
- Iron fleece to back of fabric.
- Stitch bottom of bag to front and back panels.
- Press seams toward bottom of bag and stitch quilting lines to hold seam allowances in place.



- To make bag handles, cut TWO 3" x 36" rectangles of lining fabric.
- Cut TWO 1½" x 36" rectangles of interfacing.
- Iron interfacing onto center of fabric pieces.
- Press fabric edges without interfacing toward the center of the strips, creating a handle lining that is 1½" wide.
- Position *Purple Palm* ribbon onto strap handles, covering raw edges of fabric and stitch close to sides of ribbons.
- With right side of handles next to right side of bag, sew ends of straps to the top of the bag, aligning with gold palm fan ribbon strips.





- Fold bag in half, right sides together and stitch along both sides. Press seams open.
- To shape the flat bottom of the bag, on the inside of the bag at each corner, align the side seam with the center of the bottom section.
- Flatten the triangle and stitch straight across, 1½" from the point.
- Turn bag right side out.
- Glue the cardboard or plastic canvas rectangle to the bottom of the bag.
- Cut a 17" x 35" rectangle from lining fabric and interfacing.
- Fuse interfacing to wrong side of fabric.
- Fold fabric in half, right sides together and stitch sides.
- Leave a large opening on one of the sides for turning.
- Right sides together, stitch lining to bag along top edge.
- Turn bag right side out through the side opening in the lining.
- Slip stitch opening closed.
- Add a line of stitching along the top of the bag.

